

**DACIAN DAVAE
IN THE LIGHT
OF THE NEW EXCAVATIONS**

Done Şerbănescu, Cristian Schuster & Alexandru Morintz

Radovanu

- **Old excavations: 1970-1985;**
 - **New excavations: 2003-2014.**
-

Research team (2003-2014):

Romania -

Done Șerbănescu, Cristian Schuster, Alexandru Morintz, Laurențiu Mecu, Alexandru Nălbitoru, Raluca Kogălniceanu, Ionuț Tuțulescu, Ionuț Semuc, Cătălina Semuc, Alexandra Comșa, Georgeta El Susi, Valentin Dumitrașcu

Bulgaria -

Emil Petkov,

United States of America -

David Monsees, Christine Markusson, John Crary

Great Britain -

Claire Rennie

Financing Institutions:

- ◉ **Museum of Gumelnita Civilisation, Oltenița;**
- ◉ **Archaeo/Community Foundation (U.S.A.);**
 - ◉ **“Vasile Pârvan” Institute of Archaeology, Bucharest.**

Radovanu



Radovanu-Gorgana a Doua



Radovanu-Gorgana Întâia



**R
a
d
o
v
a
n
u**

© 2010 Google
© 2010 Cnes/Spot Image
© 2010 Basarsoft
© 2010 Tele Atlas

Google

44°10'36.15" N 26°31'32.06" E

cotă 190 ft

Altitudinea privitorului 8284 ft

Radovanu from the air



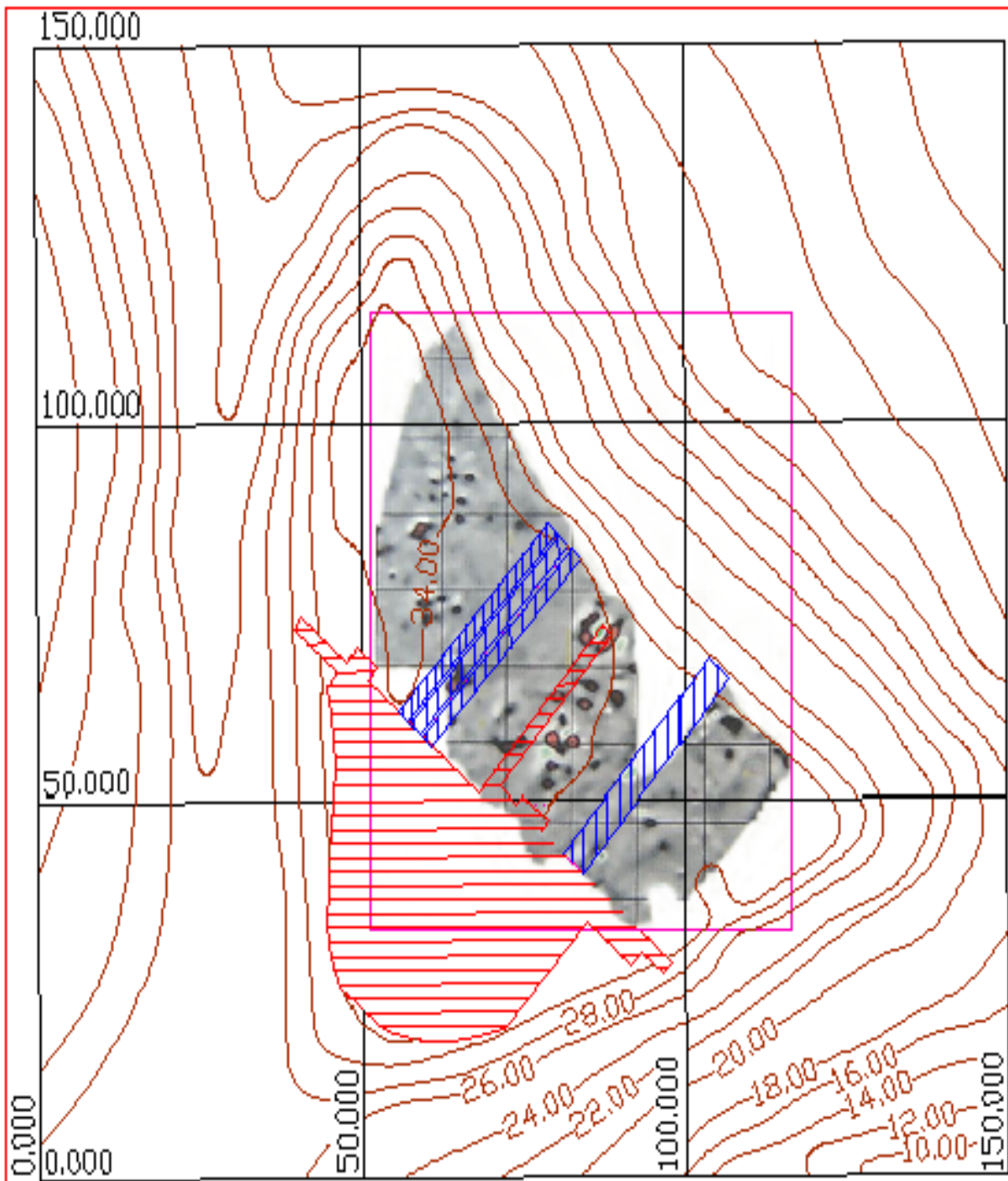
Gorgana Întâi

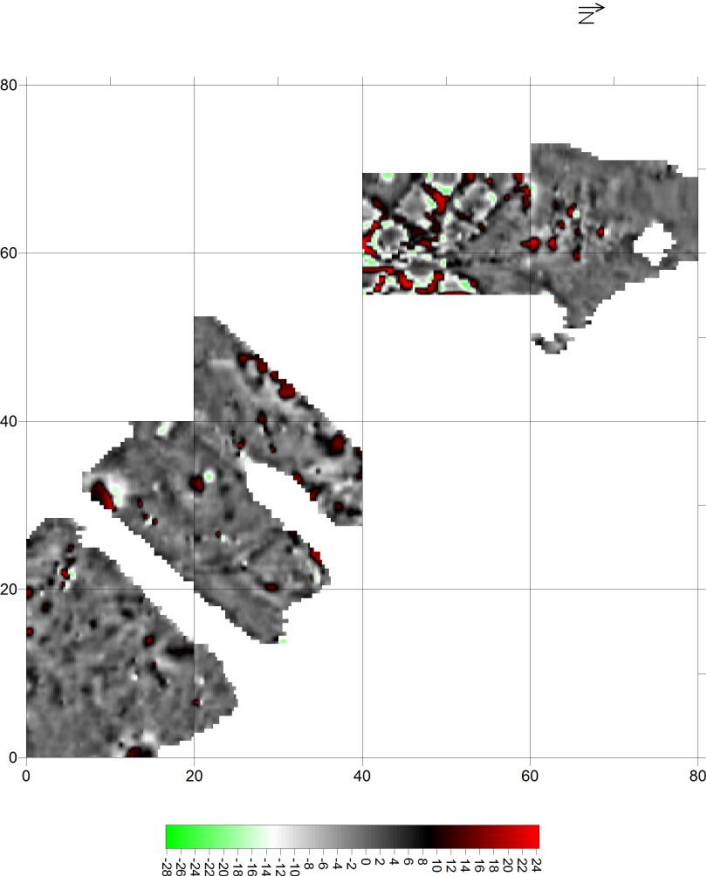
Gorgana a Doua

Radovanu-Gorgana a Doua

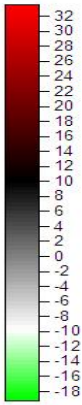
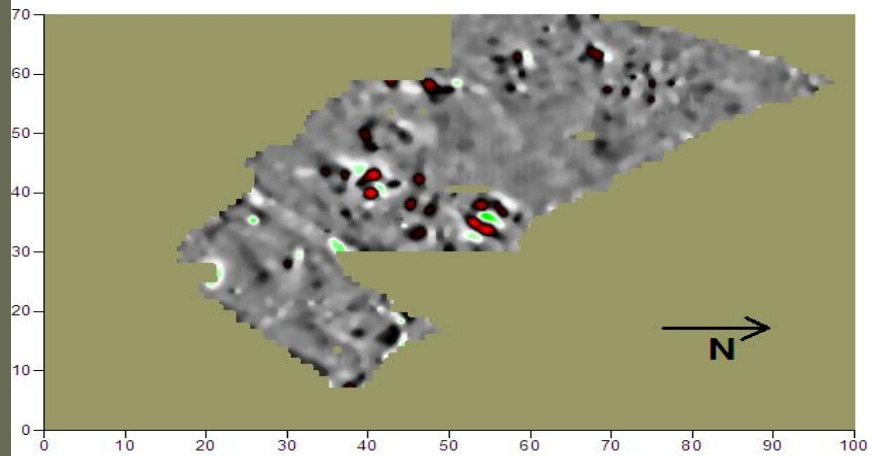


**Magnetometric
map
made in 2004**





Radovanu, Romania Bronze Age/Dacian Site



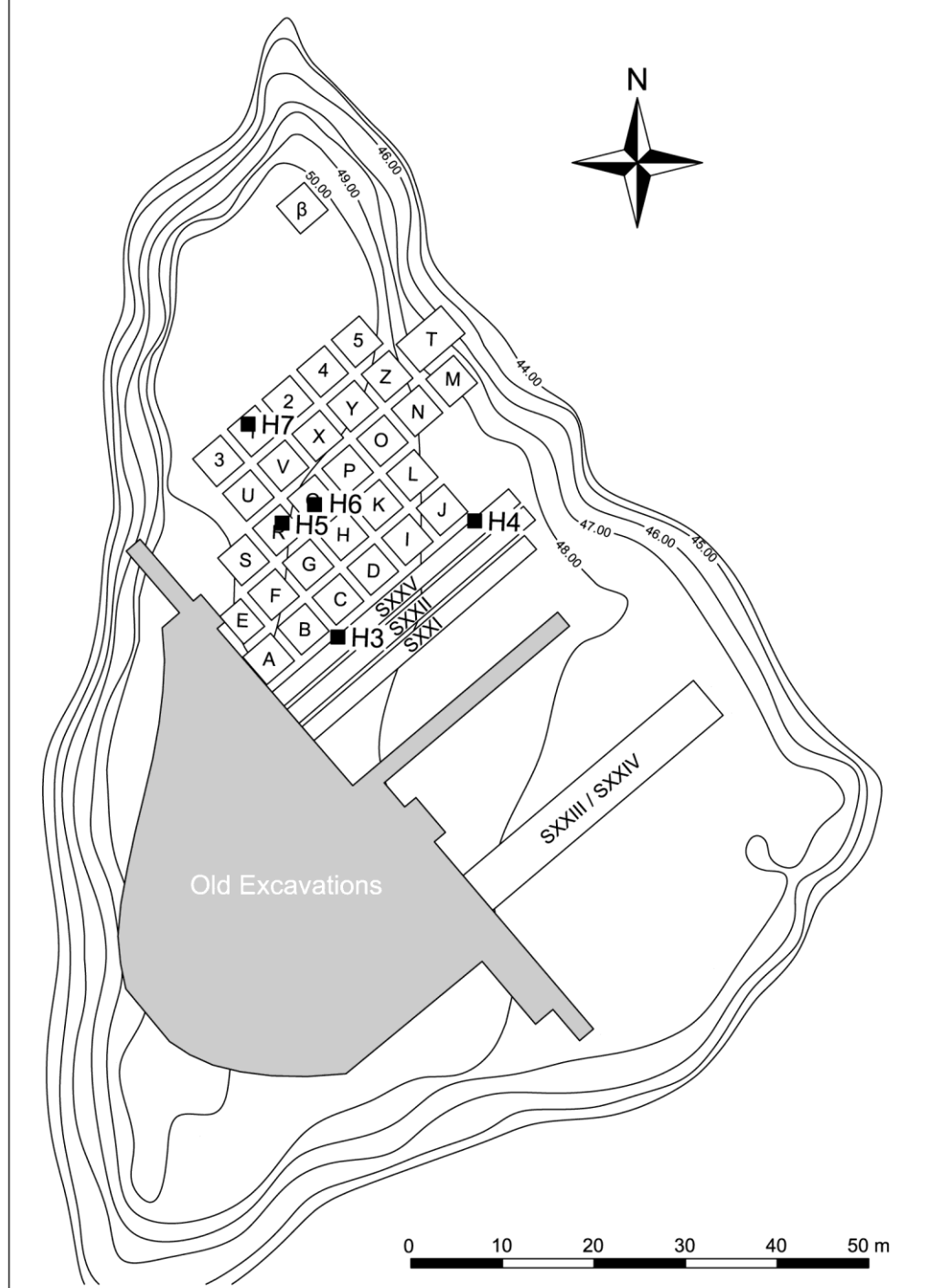


Getic houses



Getic houses and fireplaces



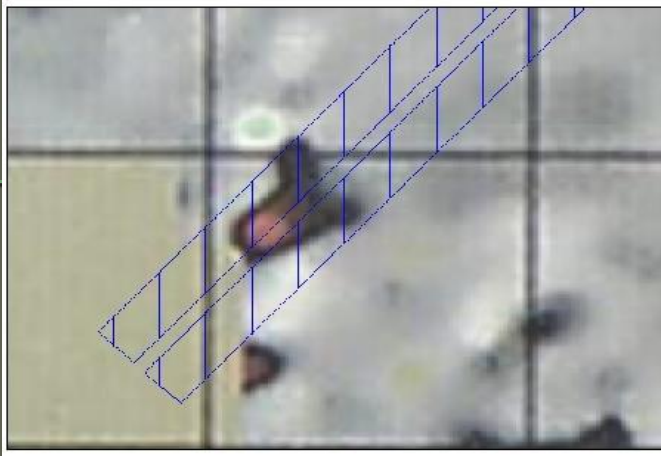




Getic hearths



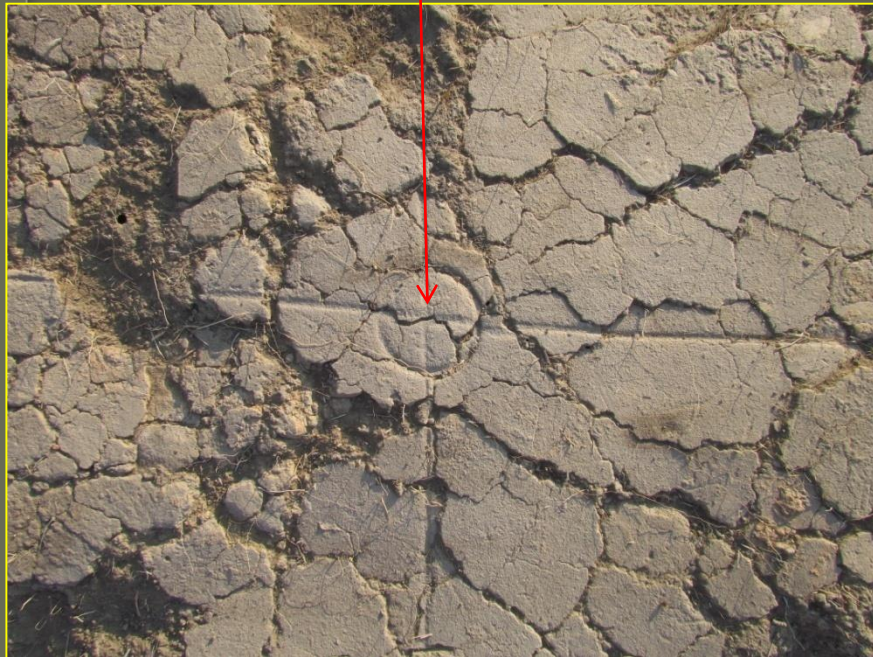
Getic fire places, pits and houses

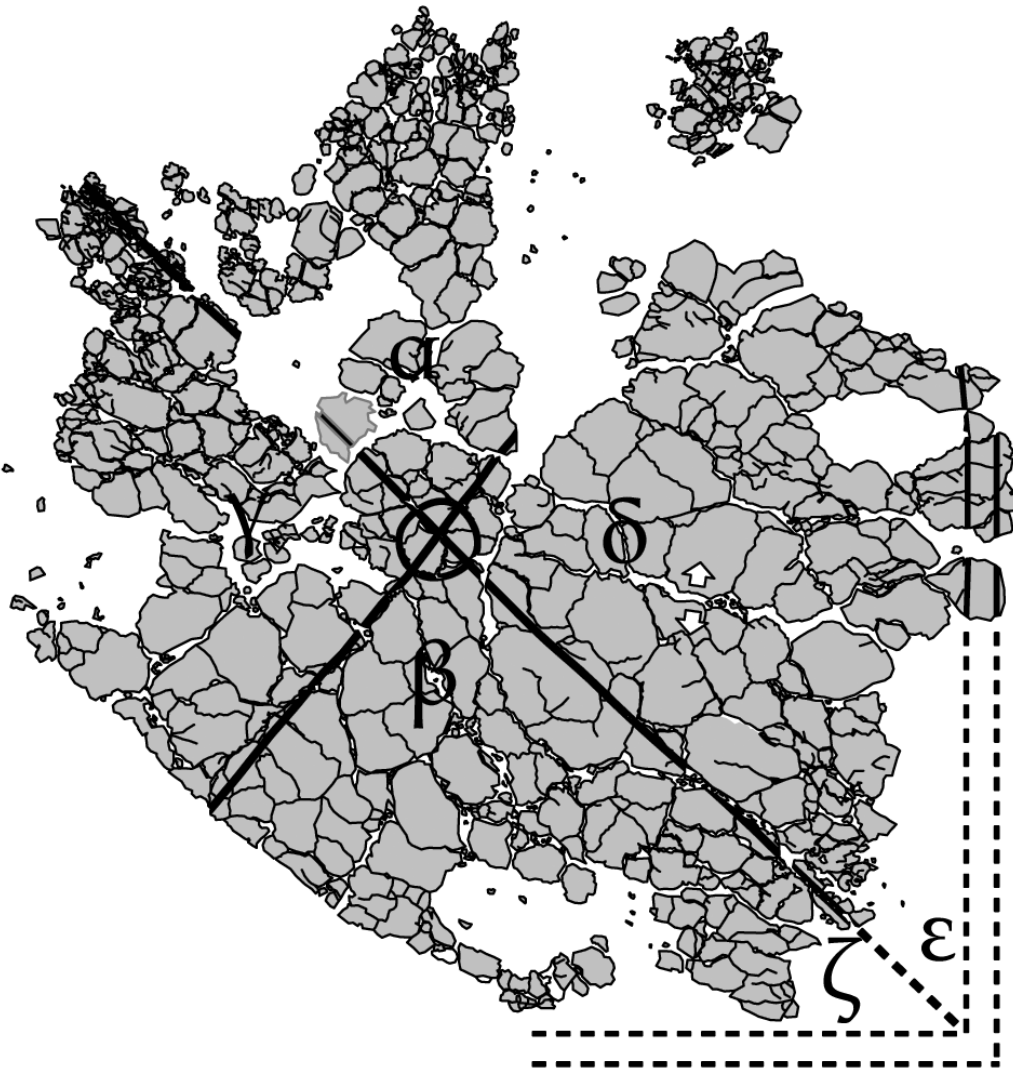


Sequence from the gradiometric map and the hearths which were discovered, based upon it



Hearth 7



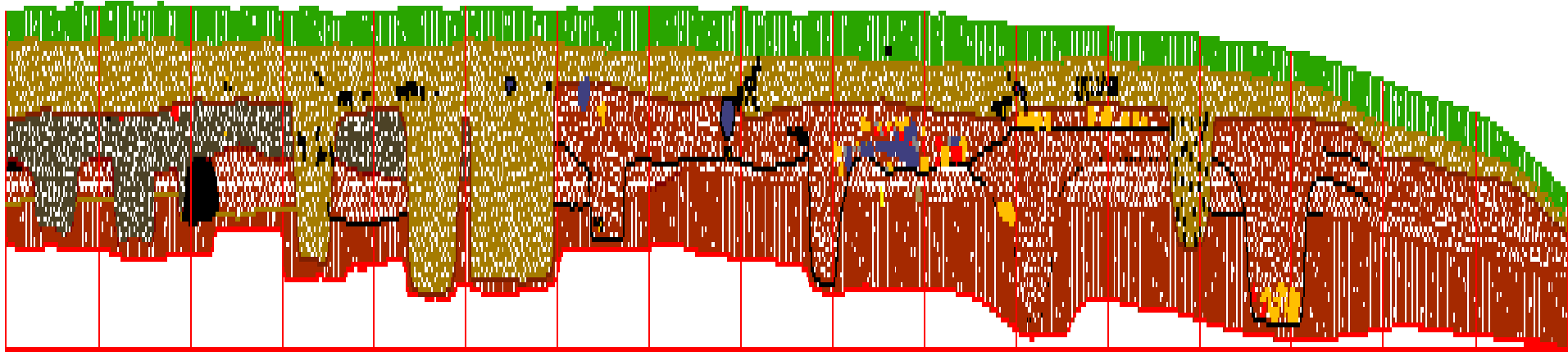
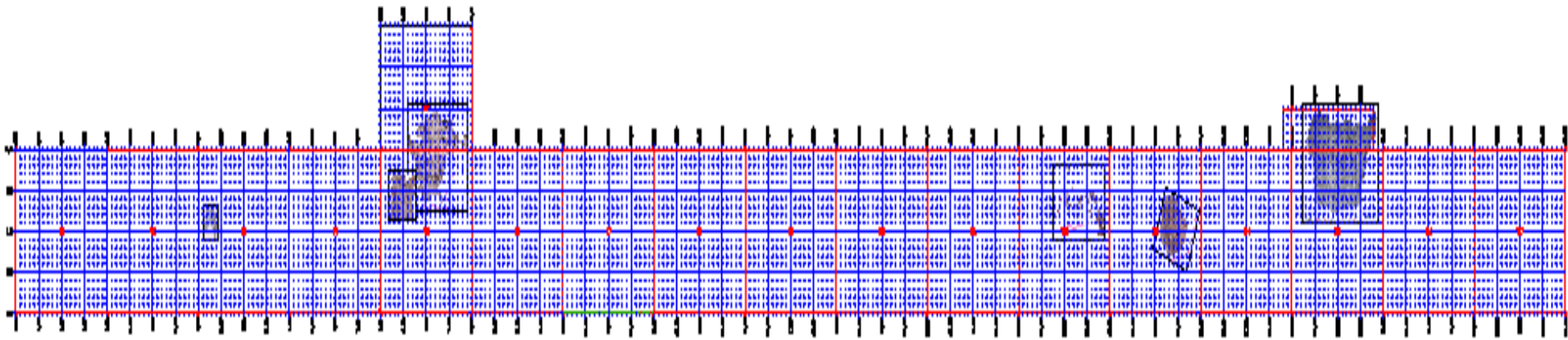


0



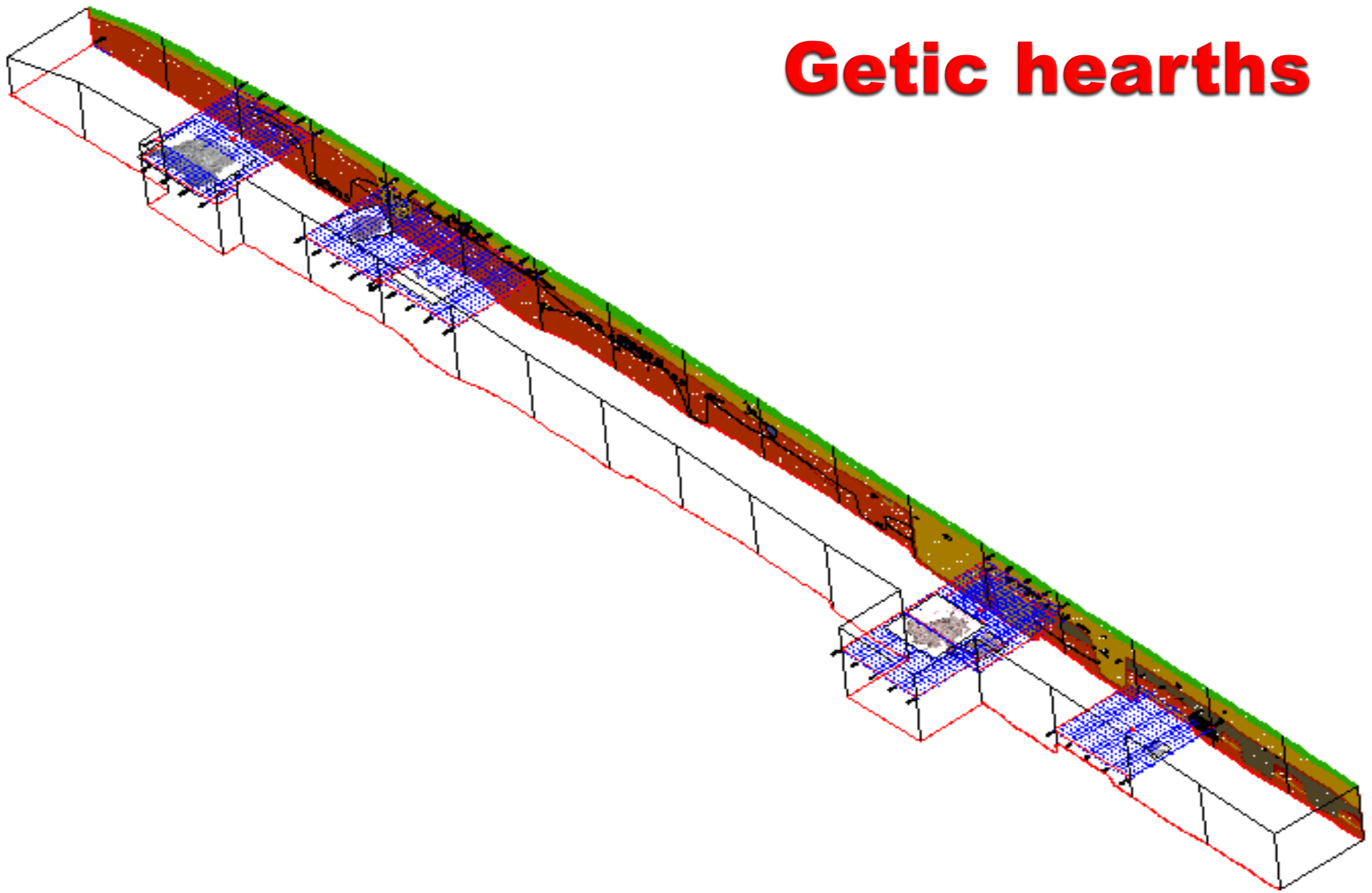
1 m

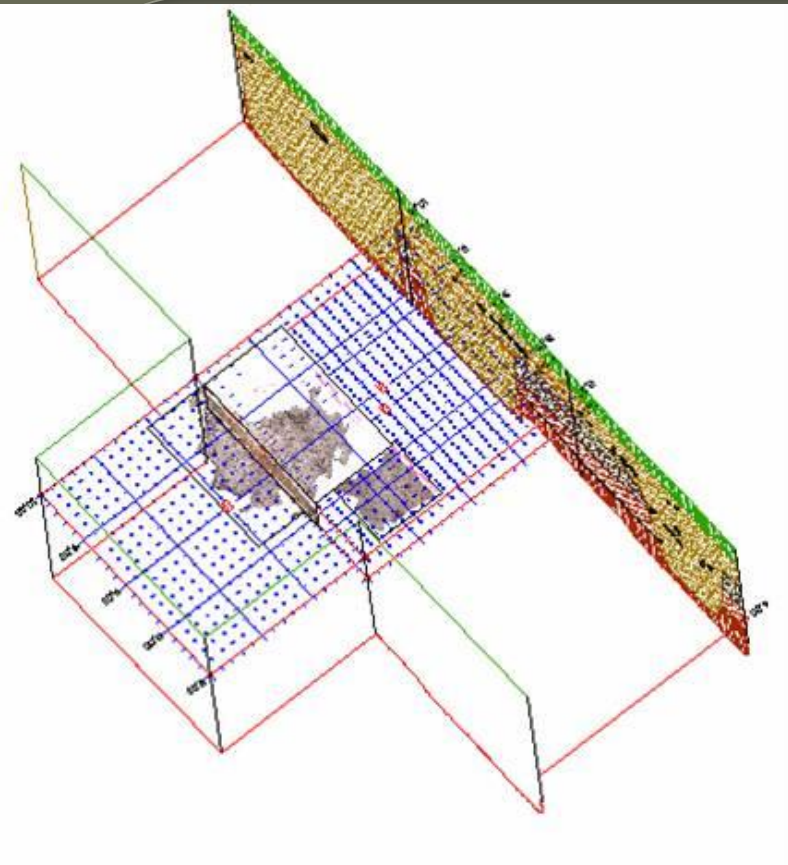
**plan of section XXV,
with special regard to the hearths ↓**



↑ profile of the southern wall of section XXV

Genetic hearths



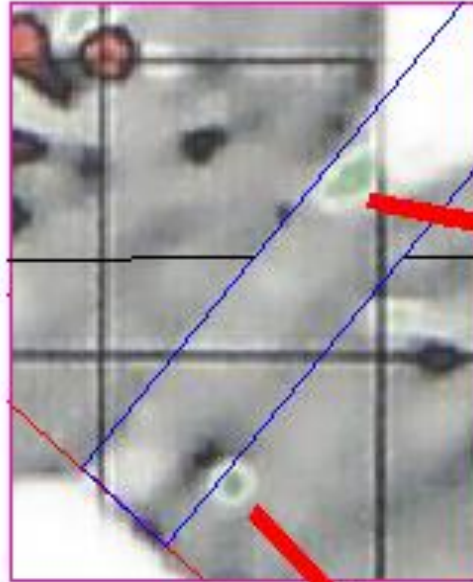


Getic overlaped hearths

Gorgana a doua



Radovanu 2004-2006



Gradiometric map compared with field reality

Getic pottery



Getic finds



Late Bronze Age pottery



Late Bronze Age pottery















Radovanu-Gorgana Întâi

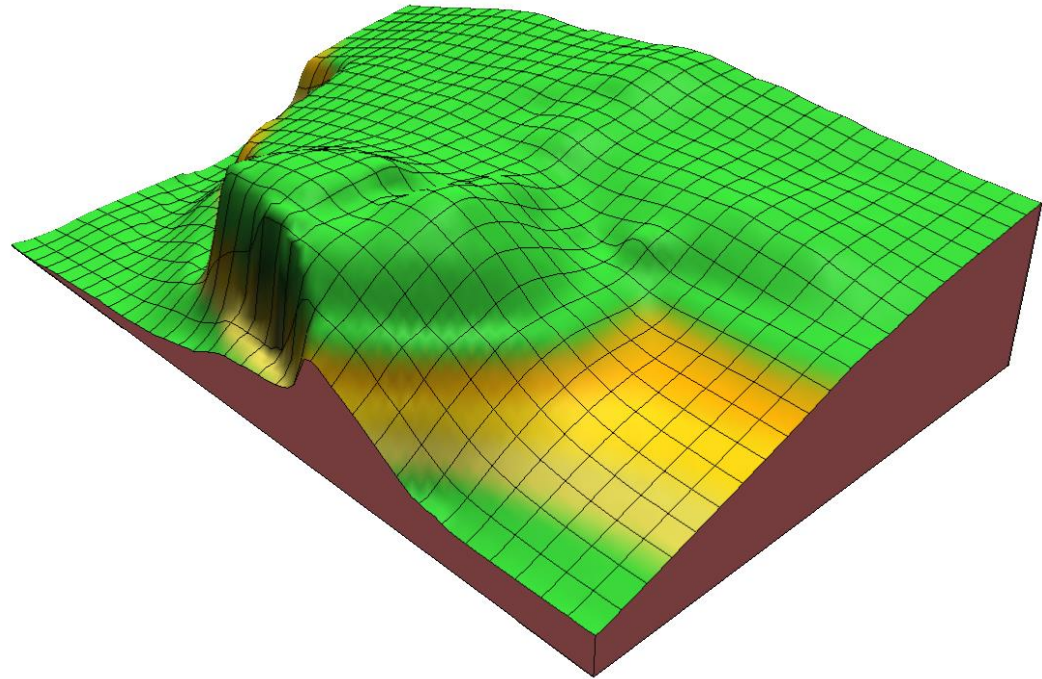
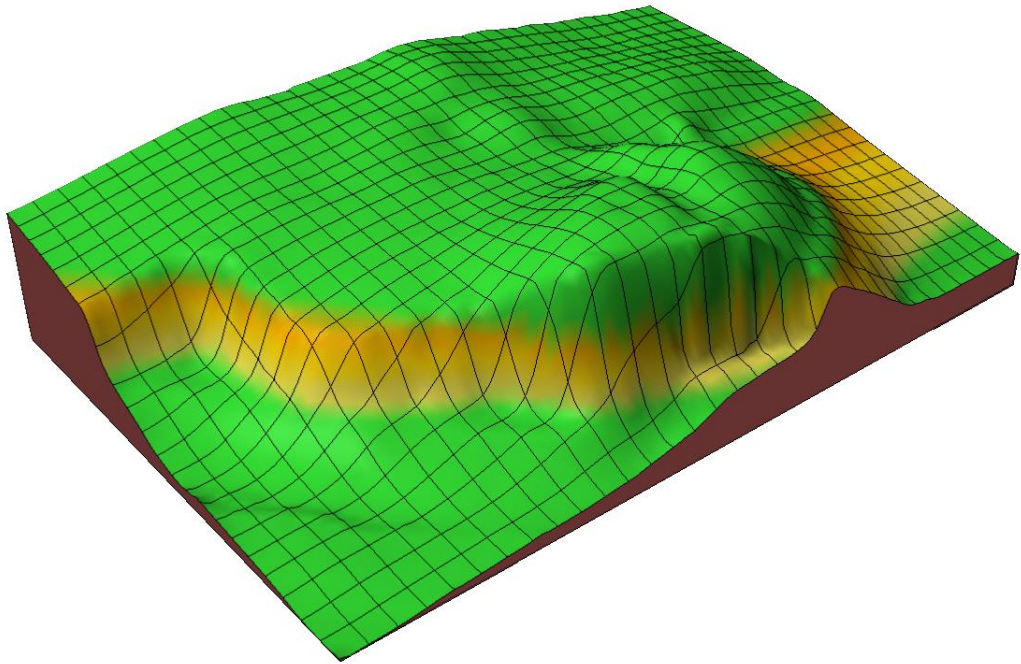




**The area
before starting
the new
excavations.**







3D model



Getic wall and Getic and Gumelnița ditches





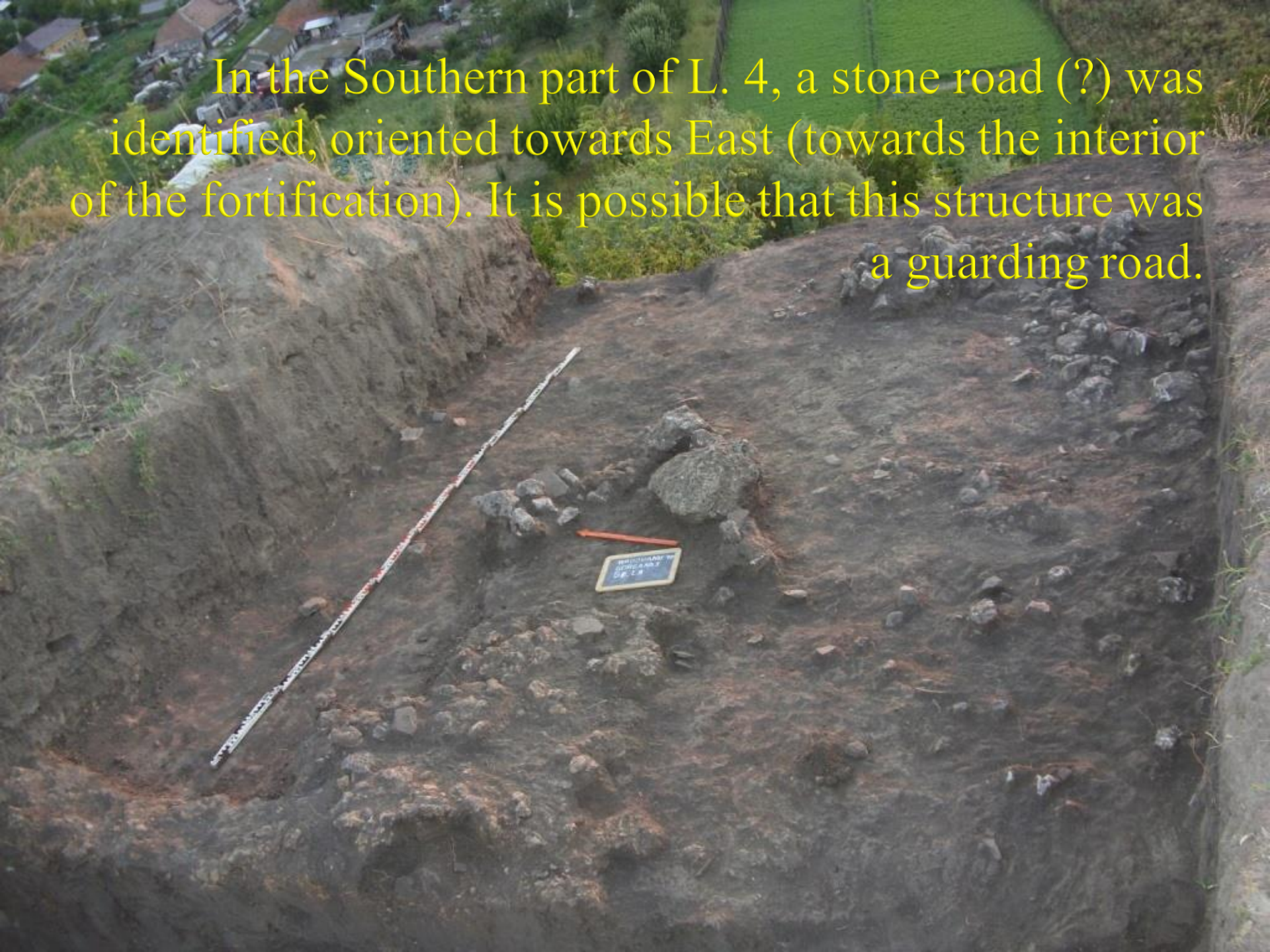
Getic wall





Storage vessels

In the Southern part of L. 4, a stone road (?) was identified, oriented towards East (towards the interior of the fortification). It is possible that this structure was a guarding road.



Getic oven



Yamnaya burial



Ditches made inside the tell led to the fact that the genetic house L4 was identified only on a small surface.



Getic oven



**S.I,
the western part.**



Gorgana I



A circular pit (Gr. 1), attributed to the Cernavoda I culture, was investigated 3.5 m from the western profile. A second, small pit (Gr. 2), attributed to the Tei culture, cut the first pit.



Another complex, Gr. 3, identified at 9.40 m from the western profile, contained a series of Cernavoda I materials.

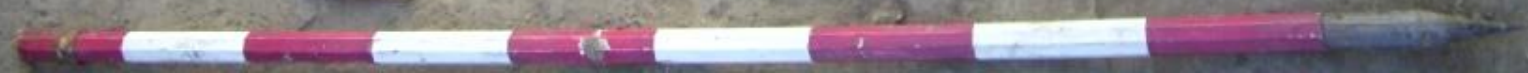




Gr. 3.
Cernavodă I

Gr. 4
Tei

RĂDOVANU "IP"
GORGANA I
SI, Cro, C. II



S V was excavated at 1.50 m south of S I. Cpl. 5 was identified at the depth of -0.40 m. A large number of animal bones were discovered in the vicinity of the pottery fragments from the center of the complex.



The research in the eastern end of S I brought to light a Getic house (L 4).



Following these investigations, at 25.40 m north of S I, in S II, a Cernavoda I house (L. 3) was excavated. Two hearth were identified in this house.





BAUOVANEI 70
GORGANAT
53. L. 2

This structure could be an annex of L. 2 (Gumelnița), discovered in its vicinity. An interesting fact is that almost all the pottery discovered in it is restaurable.



L.6 - Gumelnița





Cernavodă I house





Gumelnița pit

Getic pit



Cernavodă I pit



Cernavodă I pit



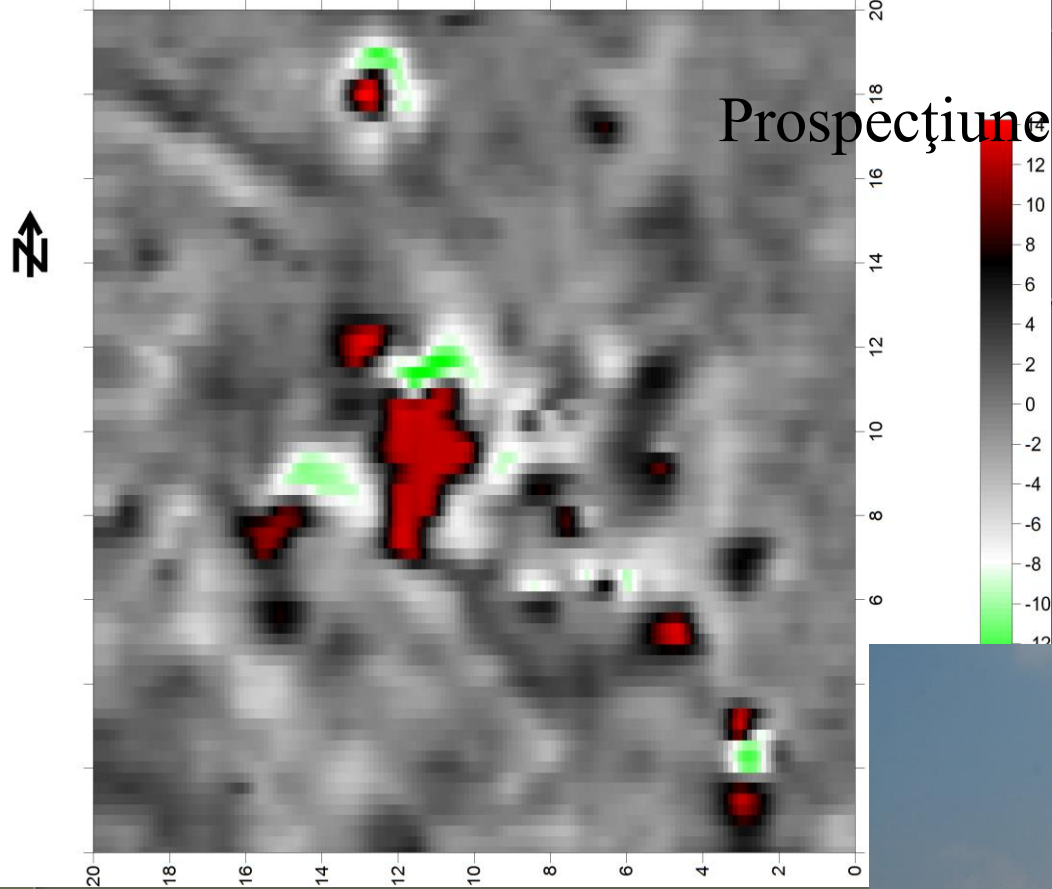
Getic pit



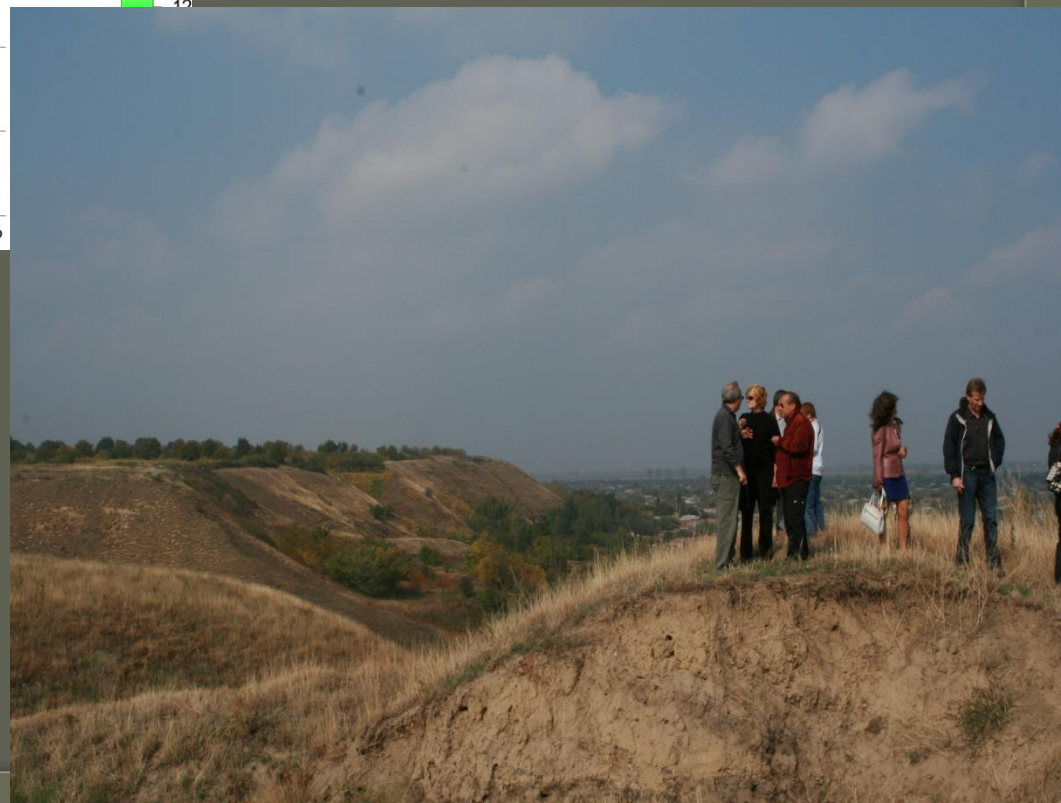
Getic oven?

Getic pit





Near
Gorgana I





Getic House L. 3.



Wattle and daub fragments with traces of rods.

Gorgana Întâi





Cernavodă I finds



Site museum



POPEȘTI-NUCET

Map

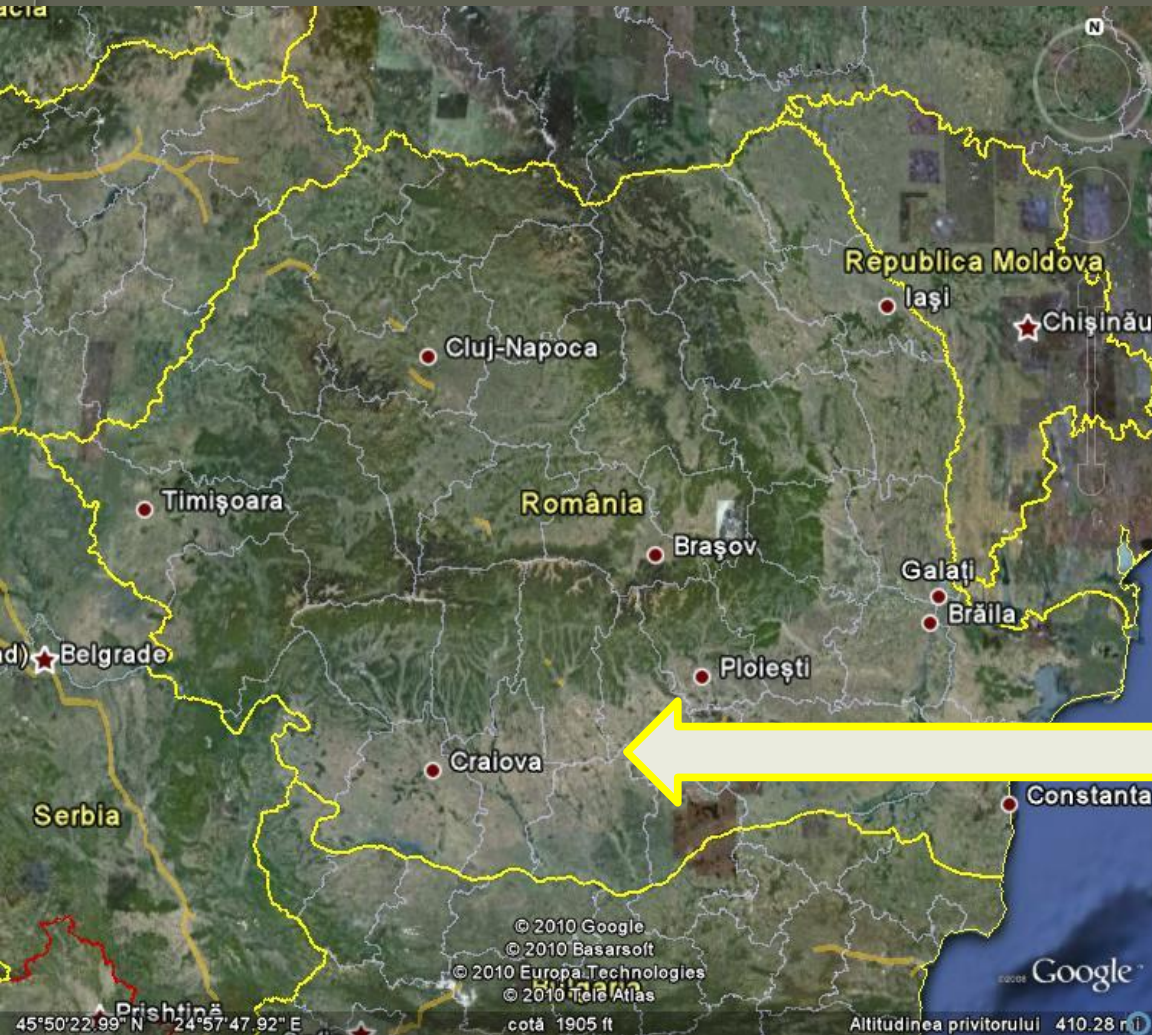
Hybrid



720ft

Imagery © 2008 GeoEye, I-cubed

Radovanu Culture



Mascots: Sabaka

